

# TOSIBOX®

## Lock 200 Quick Start Guide



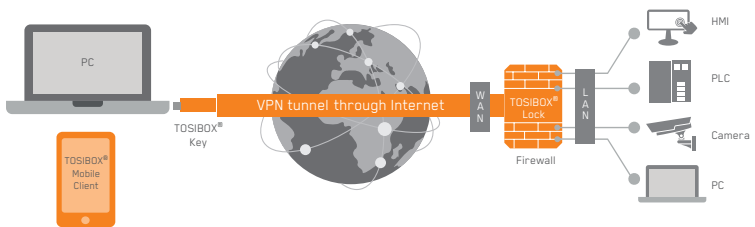
Copyright © Tosibox Oy, 2019

### 1 Matching the Lock with the Key



1. Connect the AC adapter to the Lock and wait for 2 minutes.
2. Insert the Key into the USB port of the Lock. When the LED on the Key turns off or the Info LED on Lock front panel stops blinking, (after approx. 10 seconds) the matching is complete and you can remove the Key from the USB port.
3. Go to **2a** if deploying into broadband networks (ethernet) or **2b** if deploying into mobile networks. If deploying Locks as DHCP client into existing networks, please see the TOSIBOX® user manual.

### 2a Deploying into Broadband Networks




1. Connect an Internet-connected ethernet cable to the Lock's WAN port .
2. Plug the devices into the Lock's LAN ports (LAN 1-3). If the devices have static IP addresses, please see *Deploying the Lock* in the TOSIBOX® user manual.

## 2b Deploying into Mobile Networks



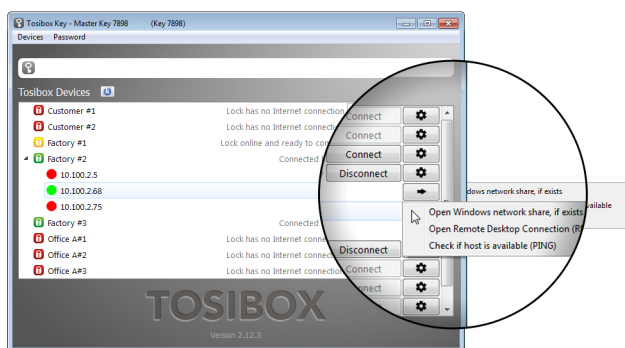
USB modem

1. Connect a computer to the Lock's service port  with an ethernet cable.
2. Type `http://172.17.17.17` into your browser's address field to access the Lock's user interface. Log in using "admin" account. The password can be found on the bottom of the Lock. Select *Network* → *USB modem* and either use the Automatic APN setting or fill in the APN according to your mobile operator settings. Enter PIN code if necessary. Click *Save*.
3. Plug a supported USB Modem into the USB port of the Lock.
4. Plug network devices into the Lock's LAN ports (LAN 1-3). See *Deploying the Lock* in the user manual for static IP configurations.
5. Verify on the status page of the Lock user interface that Internet connection is OK.




For more information and latest supported modem models visit: [www.tosibox.com/support](http://www.tosibox.com/support)

## 3 Using the Key

Insert the TOSIBOX® Key into the USB port of your computer to install the Key software.



The TOSIBOX® Key user interface illustrated above shows all Lock devices serialized to the Key and the network devices connected to them. For more options click  or  icon.

-  The Lock is connected to the Internet and the Key has a remote connection to the Lock.
-  The Lock is connected to the Internet, but the Key doesn't have a remote connection to the Lock.
-  The Lock is not connected to the Internet.

### CE Declaration of Conformity

Hereby, Tosibox Oy declares that the radio equipment type Lock 200 is in compliance with Directive 2014/53/EU. The full text of the EU declaration of conformity is available at [www.tosibox.com/documentation-and-downloads/](http://www.tosibox.com/documentation-and-downloads/)

### FC Federal Communication Commission Interference Statement

This device complies with FCC part 15 of the FCC rules. Operation is subject to the following two conditions: (1) This device may not cause harmful interference, and (2) this device must accept any interference received, including interference that may cause undesired operation.  
**FCC Caution:** Any changes or modifications not expressly approved by the party responsible for compliance could void the user's authority to operate this equipment.



This device is UL listed in USA and Canada with UL file number E474664.

Proc. Cont. Eq  
E474664

Patented, incl. US8831020, US9900178. Patents pending, incl. US14/119753, US14/39015

Download  
user manual

[www.tosibox.com/  
documentation-and-downloads/](http://www.tosibox.com/documentation-and-downloads/)

Visit  
Support

[www.tosibox.com/support/](http://www.tosibox.com/support/)

Download  
TOSIBOX® Mobile Client

[www.tosibox.com/product/  
mobile-client/](http://www.tosibox.com/product/mobile-client/)